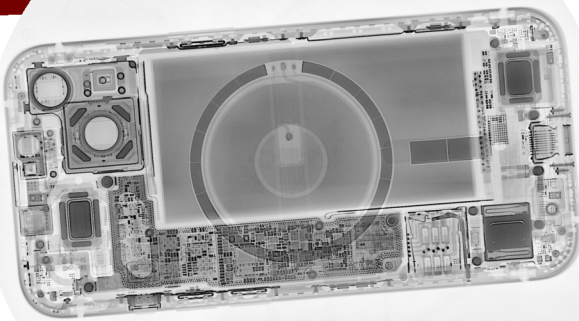


# SCANMAX 225D

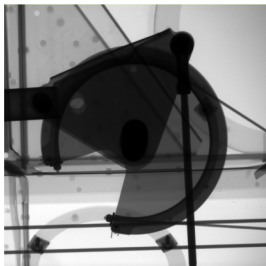
## DATASHEET



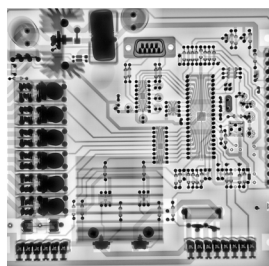
### Overview

The Scanmax 225D is a versatile high-resolution digital radiography cabinet suitable for a range of applications, including non-destructive testing, quality control, supply chain verification, forensic investigations, counterfeit and anomaly detection. It features high definition X-ray imaging and Scanview X-ray image enhancement software for detailed image analysis.

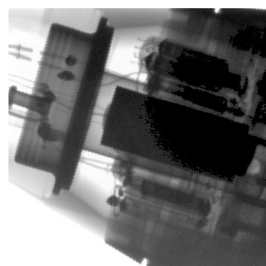
### Applications:



Aerospace components



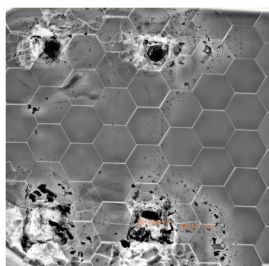
PCB Inspection



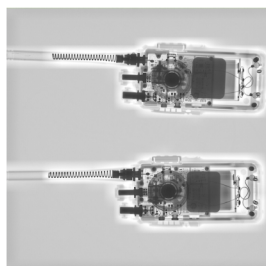
Munitions



Museums and artwork



Ballistic plates/body armour



Light material/Alloys

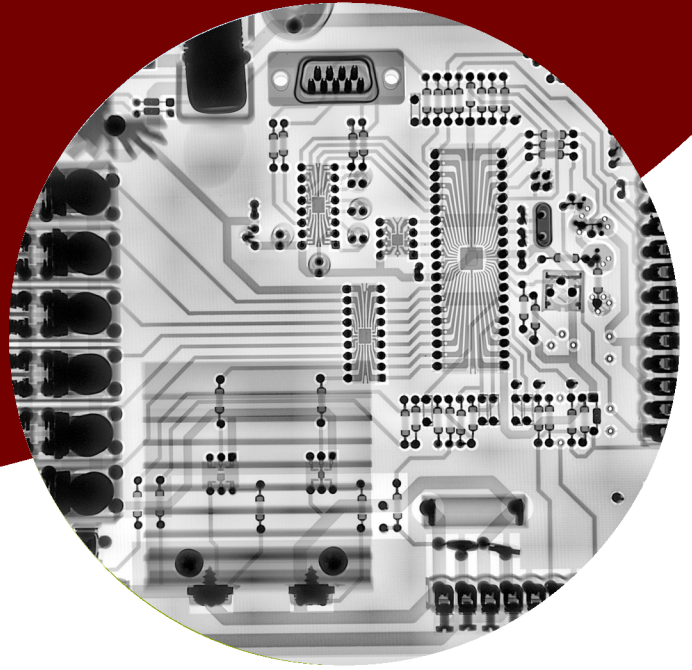


[scanna-ndt.com](http://scanna-ndt.com)

Telephone: +44(0) 207 355 3555

Email: [info@scanna-msc.com](mailto:info@scanna-msc.com)

# TECHNICAL INFORMATION



## Advanced Features

Scanmax 225D incorporates our powerful Scanview image enhancement software that provides a broad range of features including filters for highlighting circuitry, electronics, PCBs and component parts. the tiling function allow for comparison of both live and library images, measurement, 3D emboss, line and edge enhancement and annotations.

Images can be recorded and stored directly within the system software or exported as a Windows format file to USB stick or over the internet to a network location.

## Technical Information

Scanmax 225D	
Power Requirements	115/230V +/-10% 50/60 Hz
Dimensions	610 [d] x 430 [w] x 1610 [h] mm
Pixel Pitch	76 micron
Chamber Size	555 mm x 420 mm
Image Area	233 mm x 300 mm
Weight	180 kg
Smart Monitor	17" or 22 Monitor Panel PC with 8GB RAM, 128GB Flash SSD Drive w Power Guard. Windows 10 IOT
Control Options	Standard Screen, Touchscreen, keyboard or mouse

[scanna-ndt.com](http://scanna-ndt.com)

Telephone: +44[0] 207 355 3555

Email: [info@scanna-msc.com](mailto:info@scanna-msc.com)